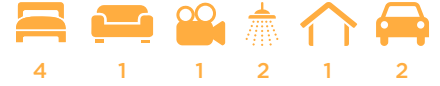


# New York III



House size: **25.3sq**

Block size range: **14m** land width / **28m** land depth

## SPECIFICATIONS

Home Width	12.85m	
Home Length	20.93m	
	<b>SQ.M</b>	<b>SQUARES</b>
Ground Floor	184.34m <sup>2</sup>	19.84sq
Garage	36.25m <sup>2</sup>	3.90sq
Porch	4.35m <sup>2</sup>	0.47sq
Alfresco	10.14m <sup>2</sup>	1.09sq
<b>Total</b>	<b>235.08m<sup>2</sup></b>	<b>25.30sq</b>

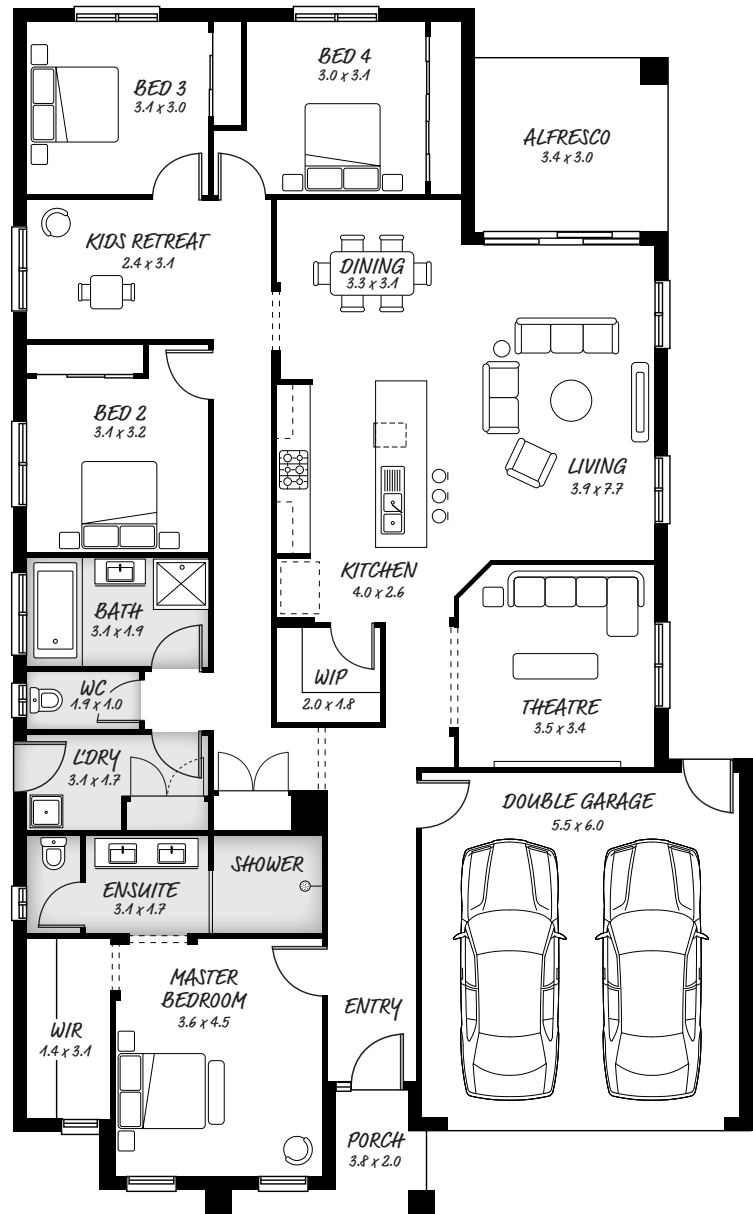
## DESIGN FEATURES

- Larger shower for extreme comfort
- Kids have their own retreat
- Theatre room close to living area
- Hallway separates bedrooms from rest of the house

## FACADE OPTIONS

All our designed facades can be adapted to this floor plan, however the below facades options are suggested by our design team.

- Botanic
- Luxembourg
- Hedgeley
- Monsanto II
- Griffith
- Phoenix



### HEAD OFFICE

5/82 Gateway Blvd, Epping 3076

Ph. 1300 060 908

email: info@astonhomes.com.au

astonhomes.com.au

Sizes may vary dependant on chosen facade. Refer to final working technical drawings for final dimensions. Facade options are only a recommendation. Ask your sales representative for what floor plan best suites certain facades.