

# Seattle



House size: **25**sq

Block size range: **14m** land width / **28m** land depth

## SPECIFICATIONS

Home Width 12.80m

Home Length 20.30m

	SQ.M	SQUARES
Ground Floor	184.79m <sup>2</sup>	19.89sq
Garage	36.11m <sup>2</sup>	3.88sq
Porch	4.18m <sup>2</sup>	0.44sq
Alfresco	10.10m <sup>2</sup>	1.08sq
<b>Total</b>	<b>235.18m<sup>2</sup></b>	<b>25.31sq</b>

## DESIGN FEATURES

Kids bedrooms located in their own private corner

Handy access direct from garage to inside

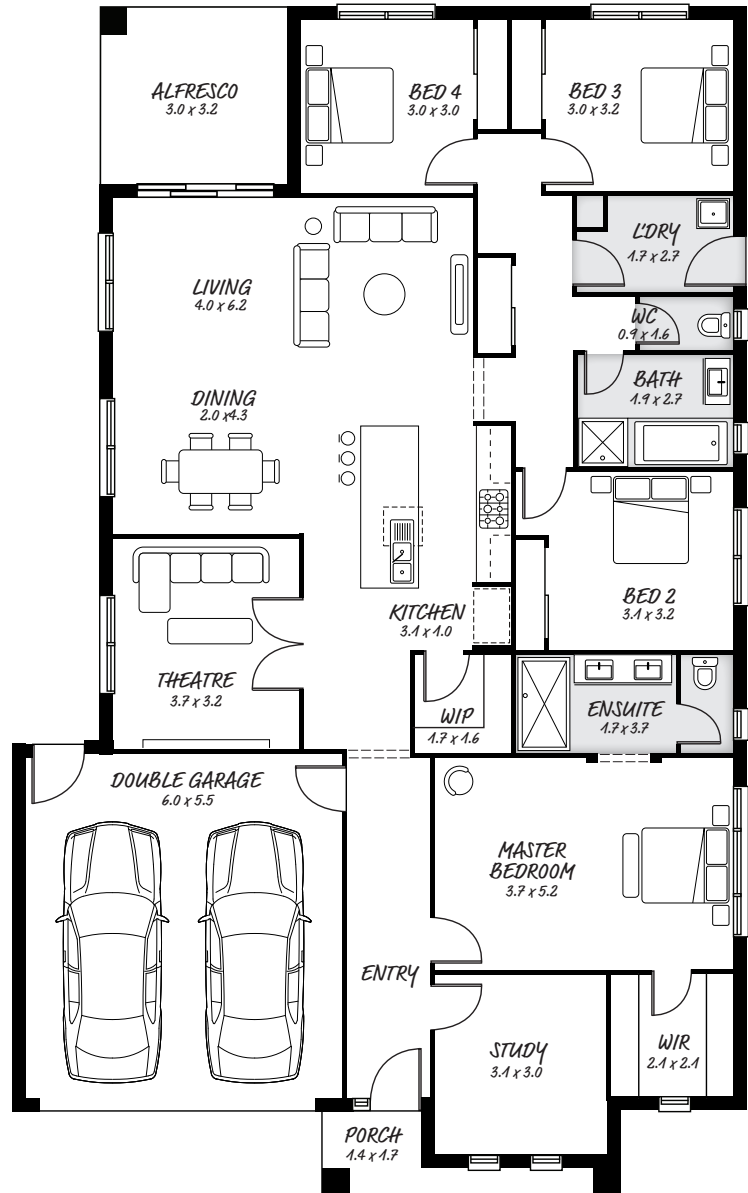
Open living space, with plenty of room

Study tucked away at front of house

## FACADE OPTIONS

All our designed facades can be adapted to this floor plan, however the below facades options are suggested by our design team.

- Botanic
- Phoenix
- Griffith
- Yarra
- Hyde



## HEAD OFFICE

5/82 Gateway Blvd, Epping 3076

Ph. 1300 060 908

email: info@astonhomes.com.au

astonhomes.com.au

Sizes may vary dependant on chosen facade. Refer to final working technical drawings for final dimensions. Facade options are only a recommendation. Ask your sales representative for what floor plan best suites certain facades.