

Hampton III



House size: **32sq**

Block size range: **16m** land width / **32m** land depth

SPECIFICATIONS

Home Width 13.30m

Home Length 21.20m

	SQ.M	SQUARES
Ground Floor	238.79m ²	25.70sq
Garage	36.55m ²	3.93sq
Porch	7.34m ²	0.79sq
Alfresco	14.65m ²	1.57sq
Total	297.32m²	32.00sq

DESIGN FEATURES

Kids bedroom separate with own bathroom

Handy access direct from garage to inside

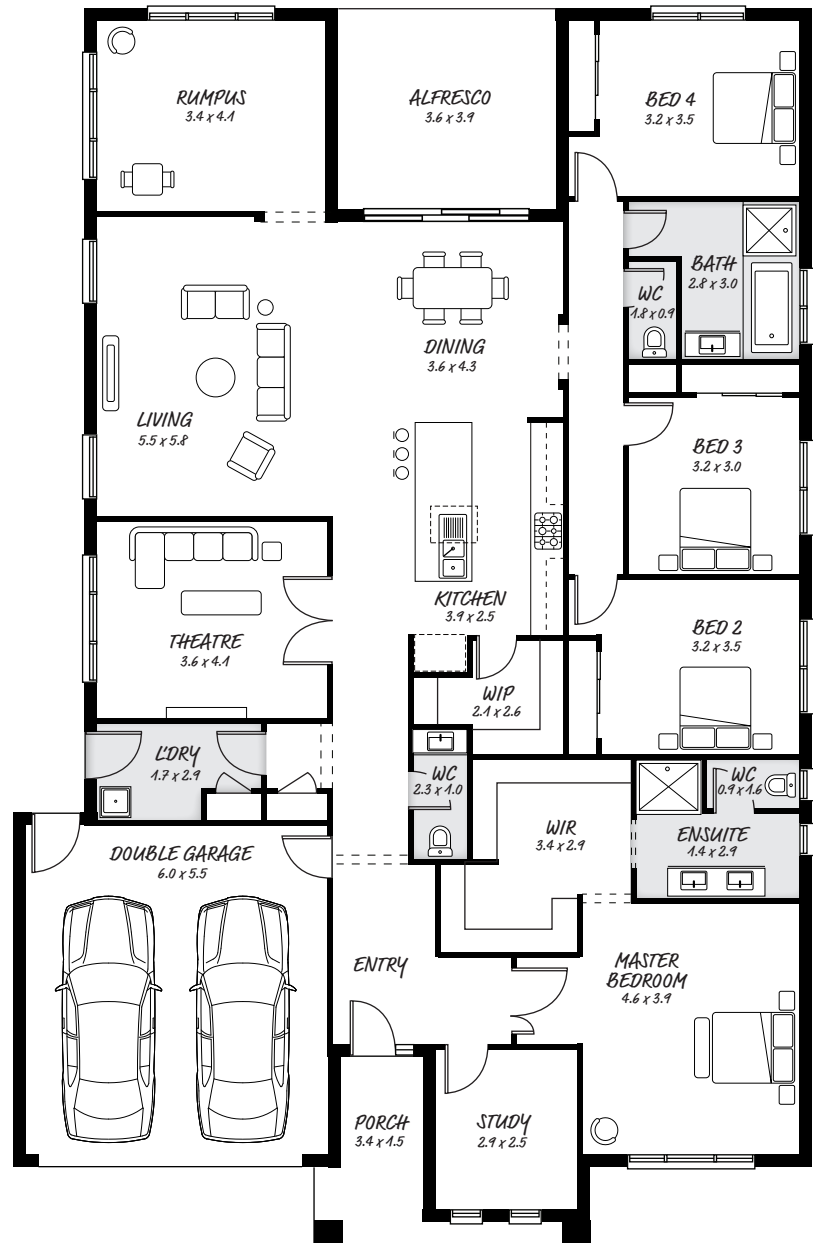
Spacious walk in pantry

Theatre room located in centre of house

FACADE OPTIONS

All our designed facades can be adapted to this floor plan, however the below facades options are suggested by our design team.

- Botanic
- Monsanto
- Hyde
- Phoenix
- Luxembourg
- Yarra



HEAD OFFICE

5/82 Gateway Blvd, Epping 3076

Ph. 1300 060 908

email: info@astonhomes.com.au

astonhomes.com.au

Sizes may vary dependant on chosen facade. Refer to final working technical drawings for final dimensions. Facade options are only a recommendation. Ask your sales representative for what floor plan best suites certain facades.