

# Hampton II



House size: **32sq**

Block size range: **16m** land width / **32m** land depth

## SPECIFICATIONS

Home Width 13.30m

Home Length 21.20m

	SQ.M	SQUARES
Ground Floor	236.80m <sup>2</sup>	25.48sq
Garage	36.55m <sup>2</sup>	3.93sq
Porch	7.34m <sup>2</sup>	0.79sq
Alfresco	16.64m <sup>2</sup>	1.79sq
<b>Total</b>	<b>297.32m<sup>2</sup></b>	<b>32.00sq</b>

## DESIGN FEATURES

His and her walk in robe

Kids activity room

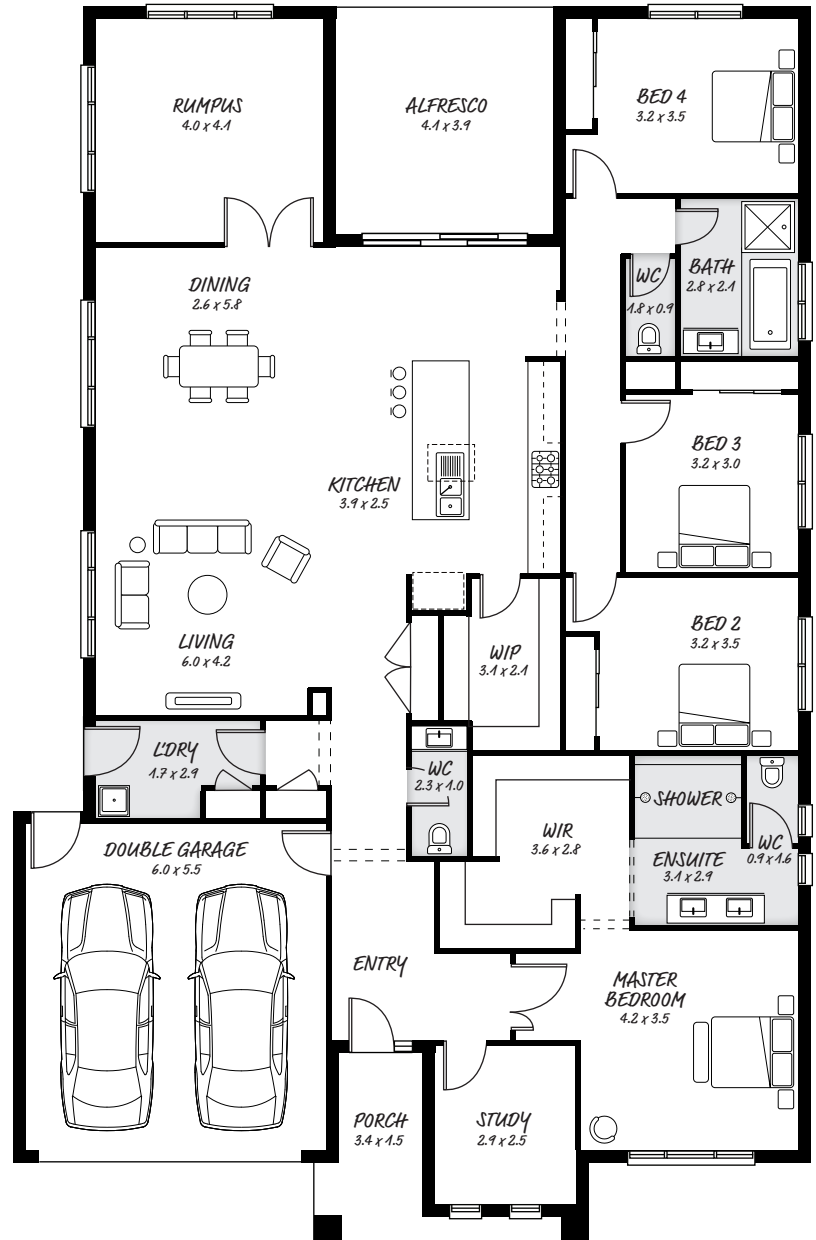
Open kitchen with island bench, with plenty of room

Walk in pantry

## FACADE OPTIONS

All our designed facades can be adapted to this floor plan, however the below facade options are suggested by our design team.

- Botanic
- Monsanto
- Luxembourg
- Phoenix
- Monsanto
- Yarra



## HEAD OFFICE

5/82 Gateway Blvd, Epping 3076

Ph. 1300 060 908

email: info@astonhomes.com.au

astonhomes.com.au

Sizes may vary dependant on chosen facade. Refer to final working technical drawings for final dimensions. Facade options are only a recommendation. Ask your sales representative for what floor plan best suites certain facades.