

Madison



House size: **16**sq

Block size range: **8.5m** land width / **26m** land depth

SPECIFICATIONS

Home Width 8.50m

Home Length 19.00m

	SQ.M	SQUARES
Ground Floor	123.60m ²	13.30sq
Garage	23.65m ²	2.55sq
Porch	4.93m ²	0.53sq
Total	152.18m ²	16.38sq

DESIGN FEATURES

Entry leads to comfortable living space

Handy access direct from garage to inside or outside

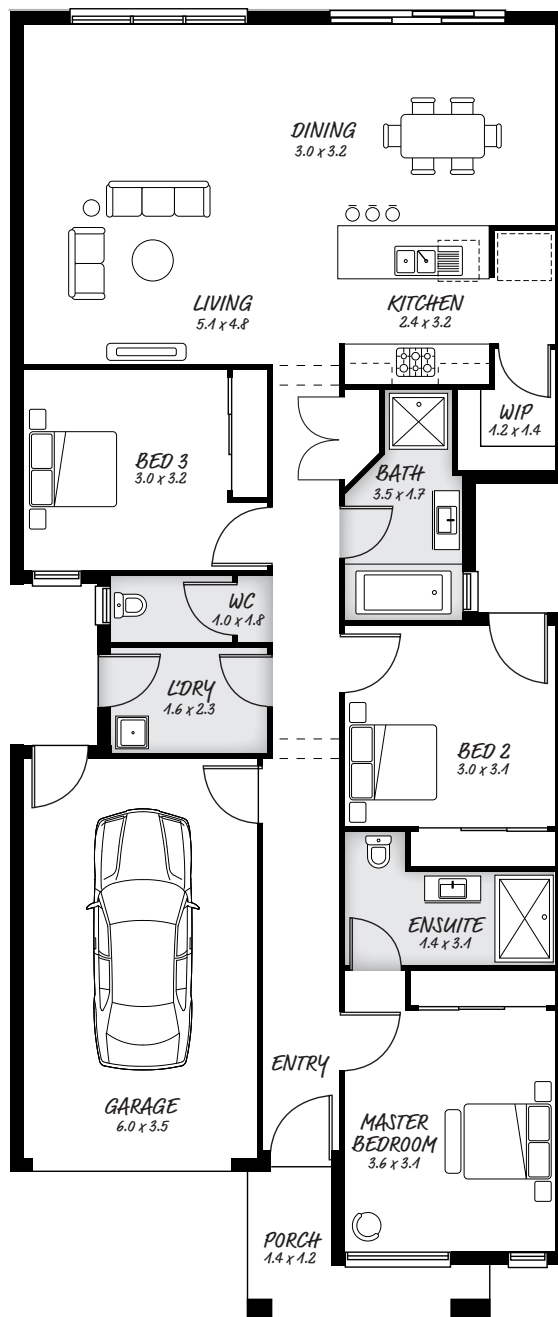
Open kitchen with island bench, with plenty of room

Laundry leads to outside for convenience

FACADE OPTIONS

All our designed facades can be adapted to this floor plan, however the below facades options are suggested by our design team.

- Botanic
- Luxembourg
- Griffith
- Phoenix
- Hedgeley
- Yarra



HEAD OFFICE

5/82 Gateway Blvd, Epping 3076

Ph. 1300 060 908

email: info@astonhomes.com.au

astonhomes.com.au

Sizes may vary dependant on chosen facade. Refer to final working technical drawings for final dimensions. Facade options are only a recommendation. Ask your sales representative for what floor plan best suites certain facades.