

Newport II



House size: **23**sq

Block size range: **12.5m** land width / **28m** land depth

SPECIFICATIONS

Home Width 11.50m

Home Length 20.60m

	SQ.M	SQUARES
Ground Floor	167.00m ²	17.98sq
Garage	36.38m ²	3.91sq
Porch	6.25m ²	0.67sq
Alfresco	8.03m ²	0.86sq
Total	209.34m ²	23.42sq

DESIGN FEATURES

Theatre near living space to supervise kids

Kids bedrooms located at end of house for privacy

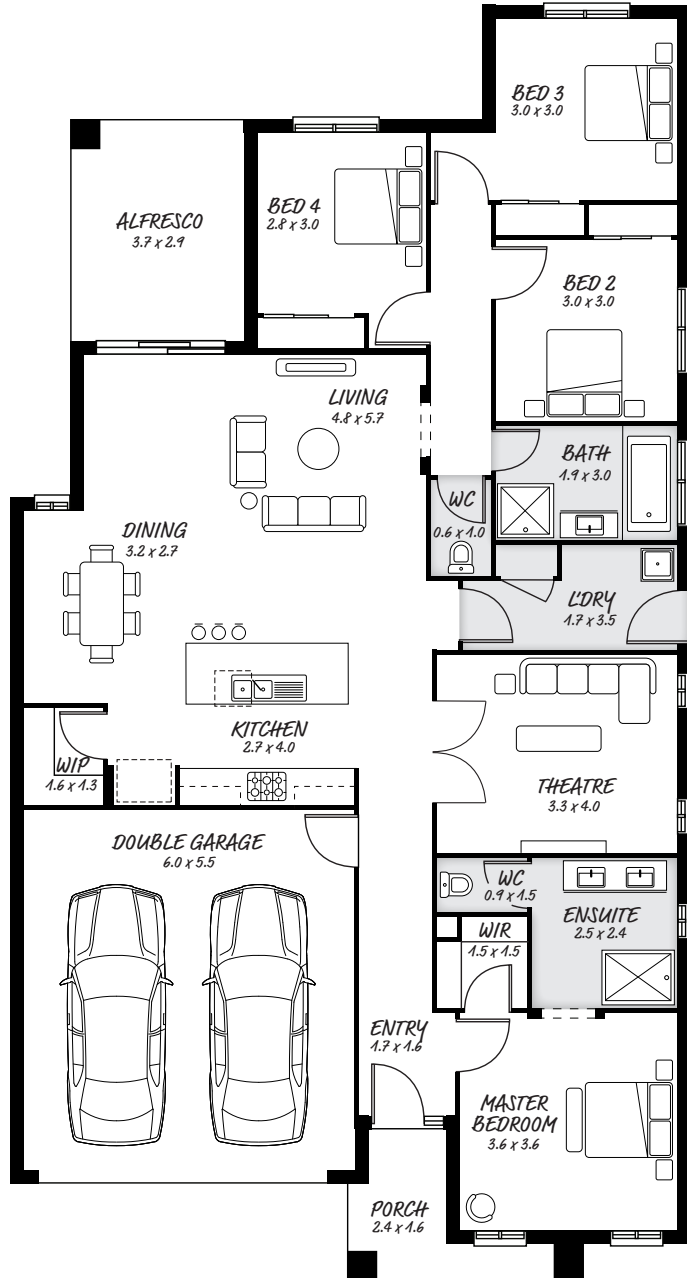
Open kitchen with island bench, with plenty of room

Living area leads to alfresco

FACADE OPTIONS

All our designed facades can be adapted to this floor plan, however the below facades options are suggested by our design team.

- Botanic
- Griffith
- Hedgeley
- Monsanto II
- Phoenix
- Yarra



HEAD OFFICE

5/82 Gateway Blvd, Epping 3076

Ph. 1300 060 908

email: info@astonhomes.com.au

astonhomes.com.au

Sizes may vary dependant on chosen facade. Refer to final working technical drawings for final dimensions. Facade options are only a recommendation. Ask your sales representative for what floor plan best suites certain facades.