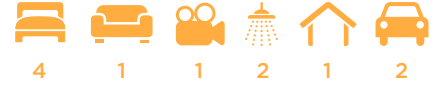


# Dakota



House size: **23**<sup>sq</sup>

Block size range: **14m** land width / **26m** land depth

## SPECIFICATIONS

Home Width 13.00m

Home Length 18.80m

	SQ.M	SQUARES
Ground Floor	167.00m <sup>2</sup>	17.98sq
Garage	36.38m <sup>2</sup>	3.91sq
Porch	6.25m <sup>2</sup>	0.67sq
Alfresco	8.03m <sup>2</sup>	0.86sq
<b>Total</b>	<b>217.72m<sup>2</sup></b>	<b>23.42sq</b>

## DESIGN FEATURES

Laundry door leading to outside

Theatre room for movie lovers

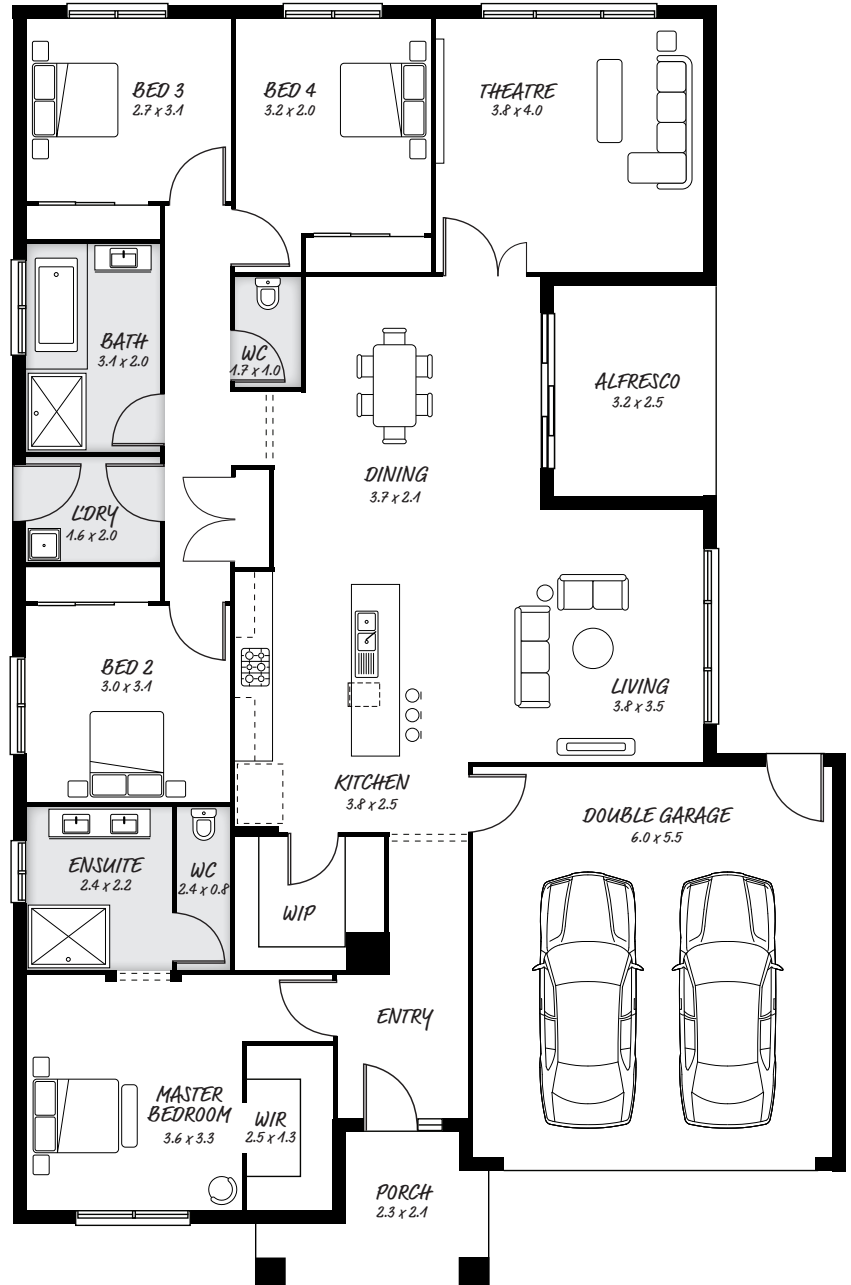
Alfresco opens to dining and living

Private space for kids with rooms at back of house

## FACADE OPTIONS

All our designed facades can be adapted to this floor plan, however the below facades options are suggested by our design team.

- Griffith      - Monsanto II
- Hedgely      - Phoenix
- Hyde          - Yarra



## HEAD OFFICE

5/82 Gateway Blvd, Epping 3076

Ph. 1300 060 908

email: info@astonhomes.com.au

astonhomes.com.au

Sizes may vary dependant on chosen facade. Refer to final working technical drawings for final dimensions. Facade options are only a recommendation. Ask your sales representative for what floor plan best suites certain facades.