

Stirling



House size: **13**_{sq}

Block size range: **8.5m** land width / **23m** land depth

SPECIFICATIONS

Home Width 8.50m

Home Length 16.00m

	SQ.M	SQUARES
Ground Floor	88.93m ²	9.57sq
Garage	23.42m ²	2.52sq
Porch	4.81m ²	0.52sq
Total	117.16m ²	12.61sq

DESIGN FEATURES

Laundry conveniently opposite bathroom

Entry hallway leads to open living area

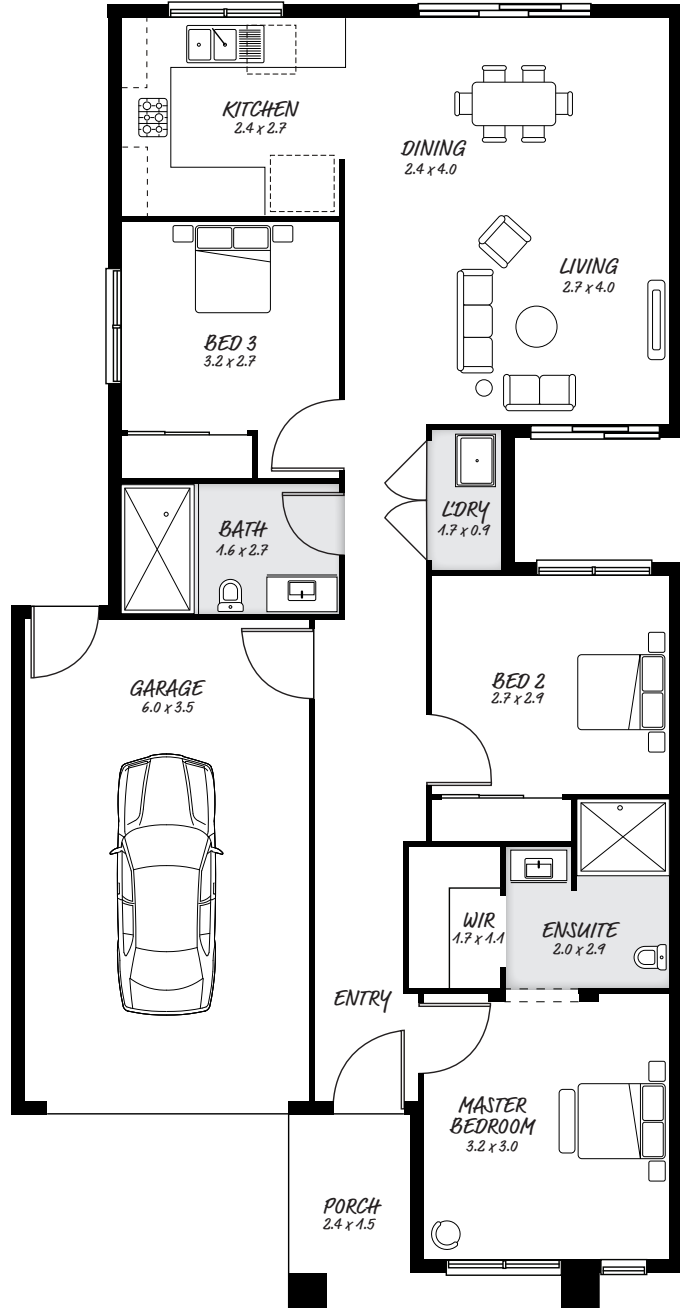
Master bedroom tucked away at front of house

Master ensuite features walk in robe

FACADE OPTIONS

All our designed facades can be adapted to this floor plan, however the below facades options are suggested by our design team.

- Botanic
- Griffith
- Hedgeley
- Hyde
- Monsanto
- Phoenix



HEAD OFFICE

5/82 Gateway Blvd, Epping 3076

Ph. 1300 060 908

email: info@astonhomes.com.au

astonhomes.com.au

Sizes may vary dependant on chosen facade. Refer to final working technical drawings for final dimensions. Facade options are only a recommendation. Ask your sales representative for what floor plan best suites certain facades.