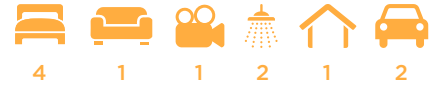


Newport



House size: **22**sq

Block size range: **12.5m** land width / **28m** land depth

SPECIFICATIONS

Home Width 11.50m

Home Length 20.90m

	SQ.M	SQUARES
Ground Floor	154.98m ²	16.68sq
Garage	37.19m ²	4.00sq
Porch	3.05m ²	0.33sq
Alfresco	11.82m ²	1.27sq
Total	207.04m²	22.29sq

DESIGN FEATURES

Three bedrooms for kids accessed by private hallway

Home theatre room for privacy

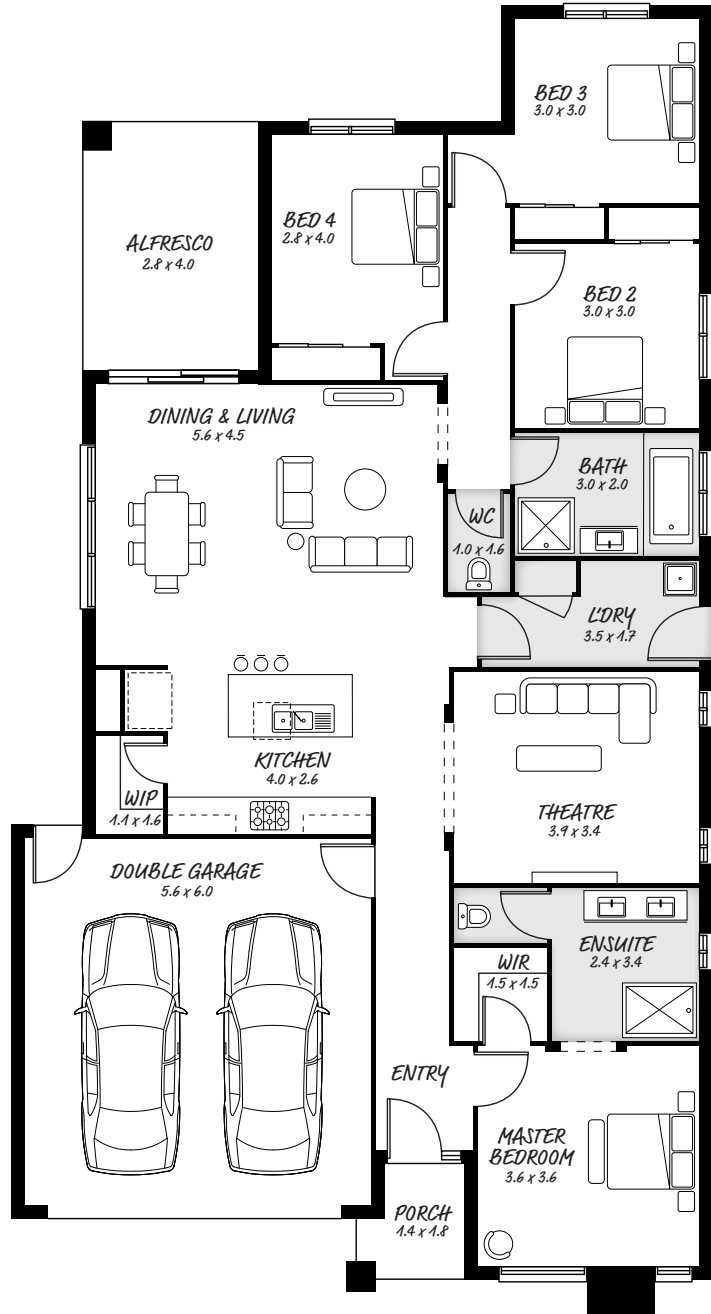
Alfresco area, perfect for entertaining

Large laundry with access to outside

FACADE OPTIONS

All our designed facades can be adapted to this floor plan, however the below facades options are suggested by our design team.

- Botanic
- Luxembourg
- Griffith
- Monsanto
- Hedgeley
- Phoenix



HEAD OFFICE

5/82 Gateway Blvd, Epping 3076

Ph. 1300 060 908

email: info@astonhomes.com.au

astonhomes.com.au

Sizes may vary dependant on chosen facade. Refer to final working technical drawings for final dimensions. Facade options are only a recommendation. Ask your sales representative for what floor plan best suites certain facades.