

Portland



House size: **25**sq

Block size range: **14m** land width / **28m** land depth

SPECIFICATIONS

Home Width 12.60m

Home Length 20.00m

	SQ.M	SQUARES
Ground Floor	177.80m ²	19.13sq
Garage	36.47m ²	3.92sq
Porch	5.67m ²	0.61sq
Alfresco	11.87m ²	1.27sq
Total	231.81m ²	24.95sq

DESIGN FEATURES

Spacious European style laundry

Twin vanities in ensuite

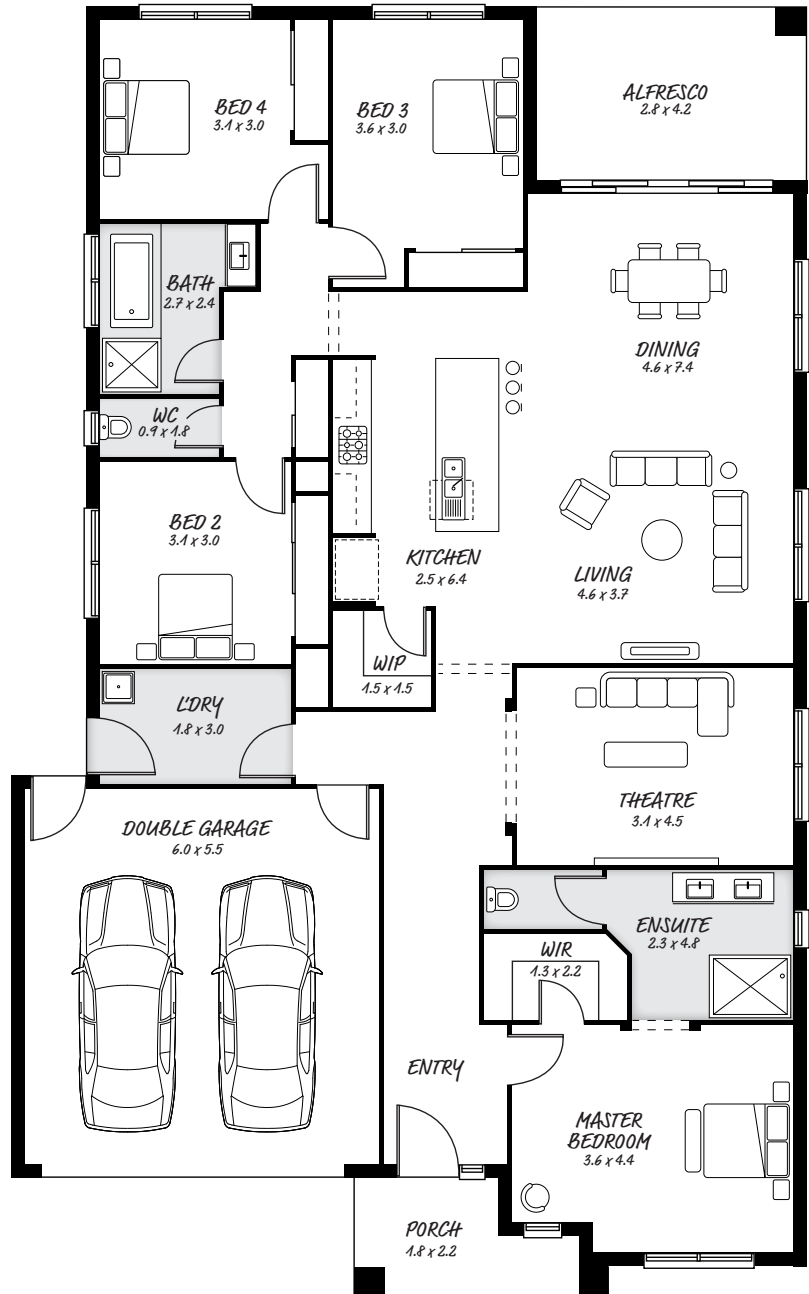
Practical living with open plan

Theatre to entertain guests

FACADE OPTIONS

All our designed facades can be adapted to this floor plan, however the below facades options are suggested by our design team.

- Griffith - Monsanto II
- Hedgeley - Phoenix
- Monsanto - Yarra



HEAD OFFICE

5/82 Gateway Blvd, Epping 3076

Ph. 1300 060 908

email: info@astonhomes.com.au

astonhomes.com.au

Sizes may vary dependant on chosen facade. Refer to final working technical drawings for final dimensions. Facade options are only a recommendation. Ask your sales representative for what floor plan best suites certain facades.