

Brookdale



House size: **23**^{sq}

Block size range: **14m** land width / **26m** land depth

SPECIFICATIONS

Home Width 13.00m

Home Length 17.90m

	SQ.M	SQUARES
Ground Floor	168.40m ²	18.13sq
Garage	37.67m ²	4.05sq
Porch	5.56m ²	0.60sq
Total	211.63m²	22.78sq

DESIGN FEATURES

Double car garage

Open flowing plan

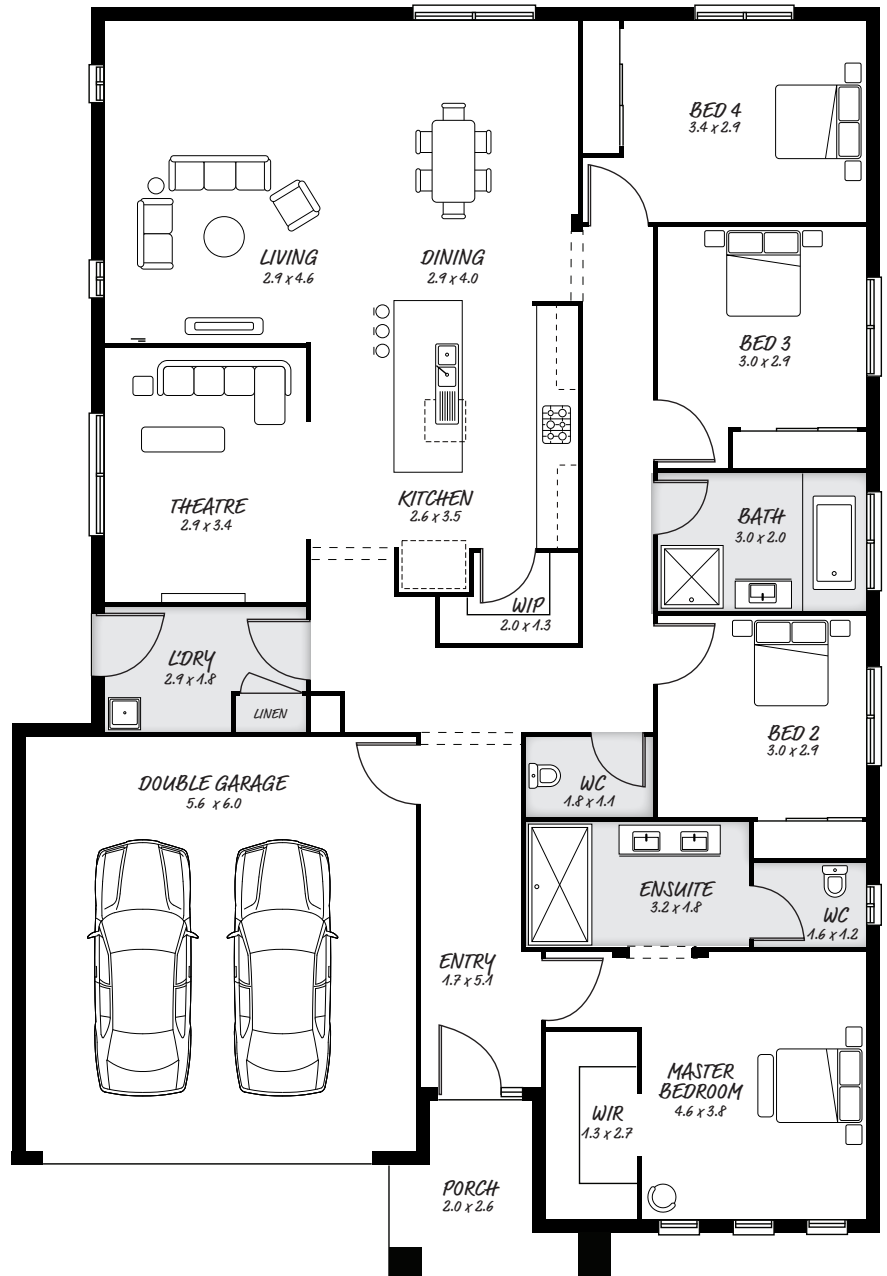
Spacious master shower in ensuite

Plenty of bench space in kitchen

FACADE OPTIONS

All our designed facades can be adapted to this floor plan, however the below facades options are suggested by our design team.

- Griffith
- Hyde
- Luxembourg
- Monsanto
- Monsanto II
- Phoenix



HEAD OFFICE

5/82 Gateway Blvd, Epping 3076

Ph. 1300 060 908

email: info@astonhomes.com.au

astonhomes.com.au

Sizes may vary dependant on chosen facade. Refer to final working technical drawings for final dimensions. Facade options are only a recommendation. Ask your sales representative for what floor plan best suites certain facades.