

# Boston



House size: **22sq**

Block size range: **12.5m** land width / **28m** land depth

## SPECIFICATIONS

Home Width	11.50m
Home Length	21.00m

	SQ.M	SQUARES
Ground Floor	161.67m <sup>2</sup>	17.40sq
Garage	35.15m <sup>2</sup>	3.99sq
Porch	5.78m <sup>2</sup>	0.62sq
<b>Total</b>	<b>204.60m<sup>2</sup></b>	<b>22.01sq</b>

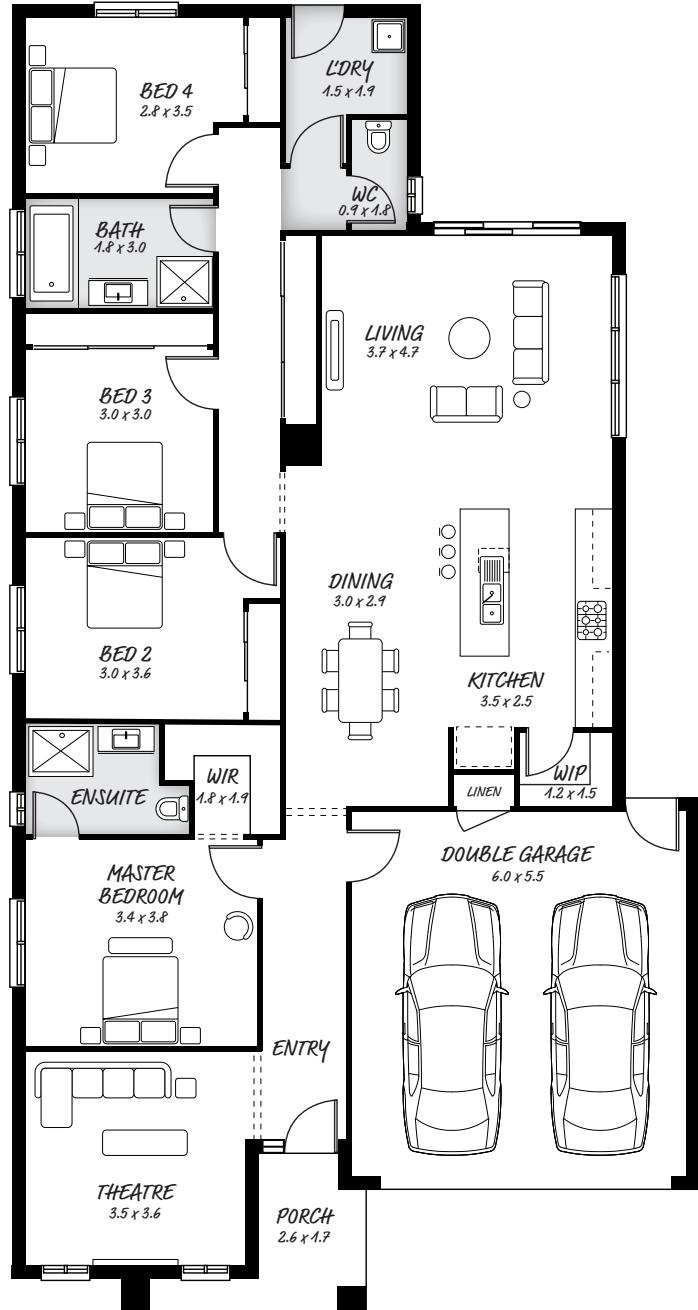
## DESIGN FEATURES

- Rear access via garage
- Additional storage space
- Open kitchen with island bench, with plenty of room
- Inviting four bedrooms

## FACADE OPTIONS

All our designed facades can be adapted to this floor plan, however the below facades options are suggested by our design team.

- Botanic
- Hyde
- Griffith
- Luxembourg
- Hedgeley
- Phoenix



### HEAD OFFICE

5/82 Gateway Blvd, Epping 3076

Ph. 1300 060 908

email: info@astonhomes.com.au

astonhomes.com.au

Sizes may vary dependant on chosen facade. Refer to final working technical drawings for final dimensions. Facade options are only a recommendation. Ask your sales representative for what floor plan best suites certain facades.