

Avenue III



House size: **23_{sq}**

Block size range: **12.5m** land width / **28m** land depth

SPECIFICATIONS

Home Width	11.50m
Home Length	19.50m

	SQ.M	SQUARES
Ground Floor	159.21m ²	17.14sq
Garage	35.96m ²	3.87sq
Porch	5.34m ²	0.64sq
Alfresco	9.39m ²	1.01sq
Total	209.09m ²	22.59sq

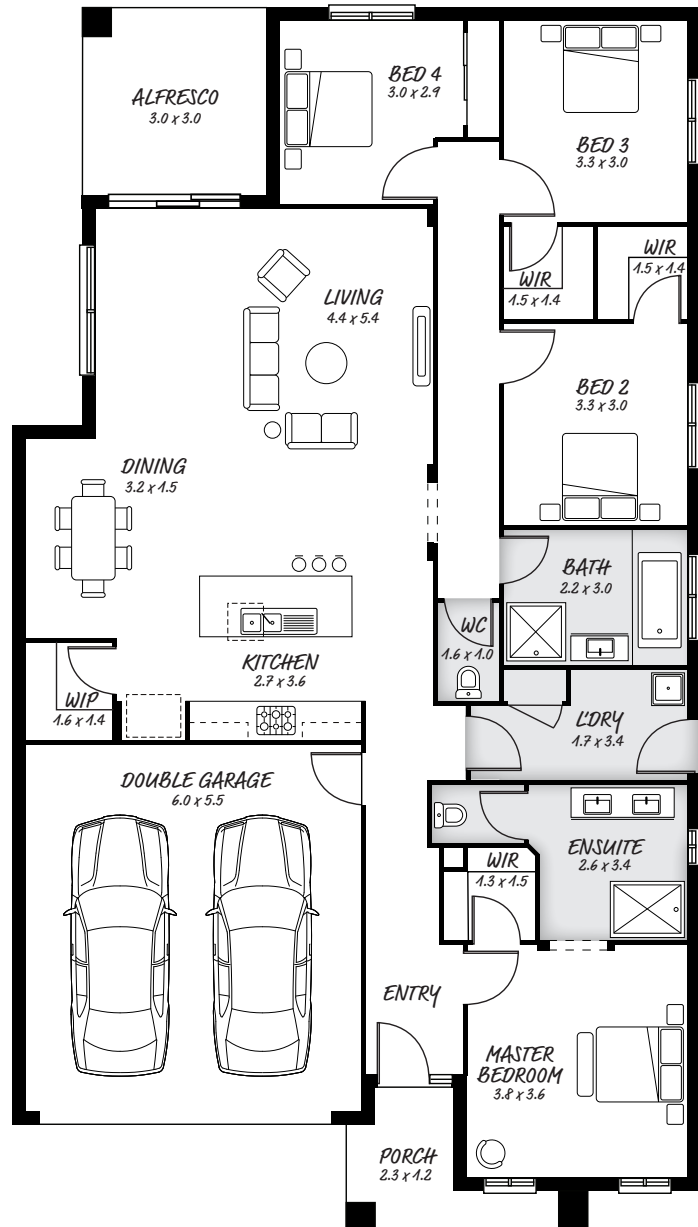
DESIGN FEATURES

- Adaptable living space
- Handy access direct from garage to inside
- Essential walk in robe to master and kids bedrooms
- Open kitchen with island bench, with plenty of room

FACADE OPTIONS

All our designed facades can be adapted to this floor plan, however the below facades options are suggested by our design team.

- Botanic
- Hyde
- Griffith
- Monsanto
- Hedgeley
- Monsanto II



HEAD OFFICE

5/82 Gateway Blvd, Epping 3076

Ph. 1300 060 908

email: info@astonhomes.com.au

astonhomes.com.au

Sizes may vary dependant on chosen facade. Refer to final working technical drawings for final dimensions. Facade options are only a recommendation. Ask your sales representative for what floor plan best suites certain facades.