

Avenue II



House size: **21**sq

Block size range: **13.5m** land width / **25m** land depth

SPECIFICATIONS

Home Width 11.50m

Home Length 18.00m

	SQ.M	SQUARES
Ground Floor	144.98m ²	15.61sq
Garage	35.98m ²	3.87sq
Porch	5.34m ²	0.57sq
Alfresco	9.39m ²	1.01sq
Total	195.69m²	21.06sq

DESIGN FEATURES

Winged bedrooms for privacy

Alfresco gives you space to spread out

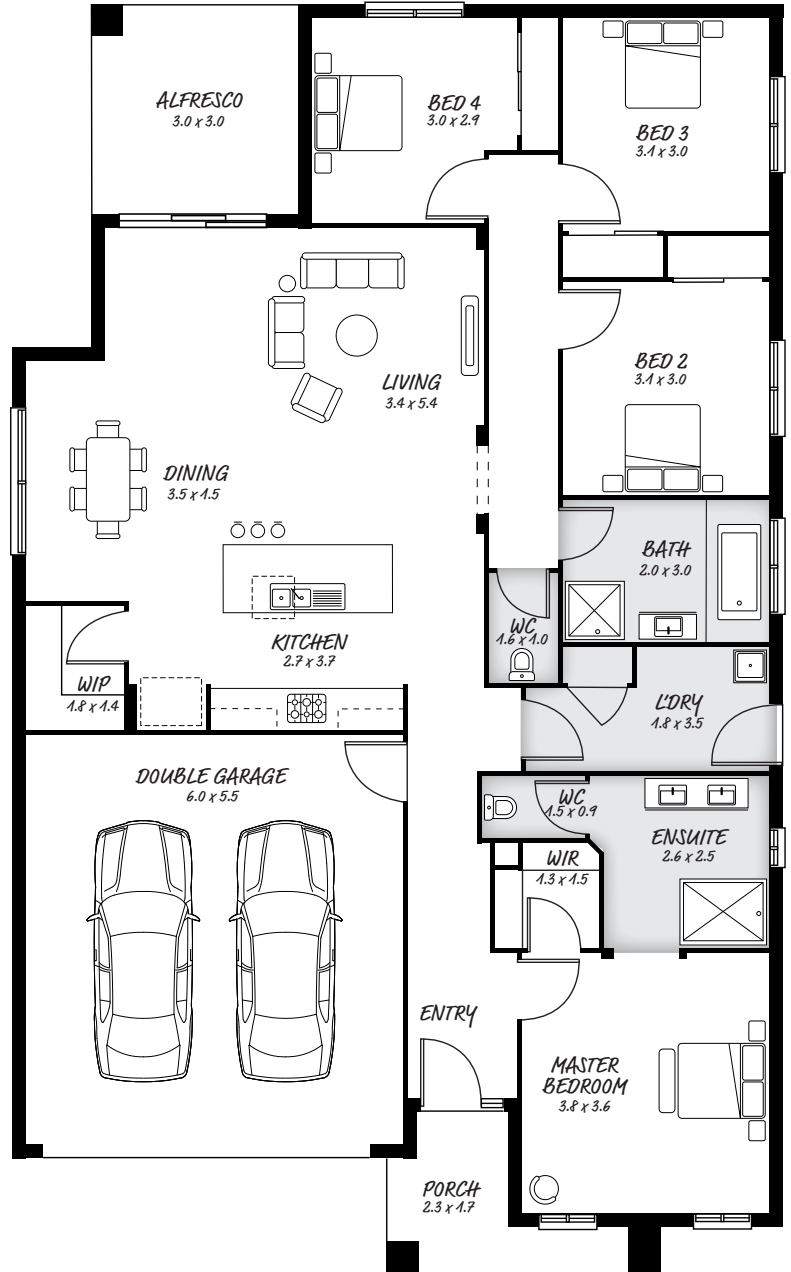
Open kitchen with island bench, with plenty of room

Enjoy his and hers basins

FACADE OPTIONS

All our designed facades can be adapted to this floor plan, however the below facades options are suggested by our design team.

- Griffith - Monsanto
- Hyde - Monsanto II
- Luxembourg - Yarra



HEAD OFFICE

5/82 Gateway Blvd, Epping 3076

Ph. 1300 060 908

email: info@astonhomes.com.au

astonhomes.com.au

Sizes may vary dependant on chosen facade. Refer to final working technical drawings for final dimensions. Facade options are only a recommendation. Ask your sales representative for what floor plan best suites certain facades.