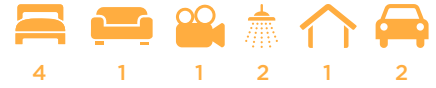


Austin



House size: **25**sq

Block size range: **12.5m** land width / **32m** land depth

SPECIFICATIONS

Home Width 11.50m

Home Length 23.50m

	SQ.M	SQUARES
Ground Floor	181.97m ²	19.59sq
Garage	36.31m ²	3.91sq
Porch	4.77m ²	0.51sq
Alfresco	13.65m ²	1.47sq
Total	236.70m ²	25.48sq

DESIGN FEATURES

Master Ensuite features walk-in robe

Handy access direct from garage to inside

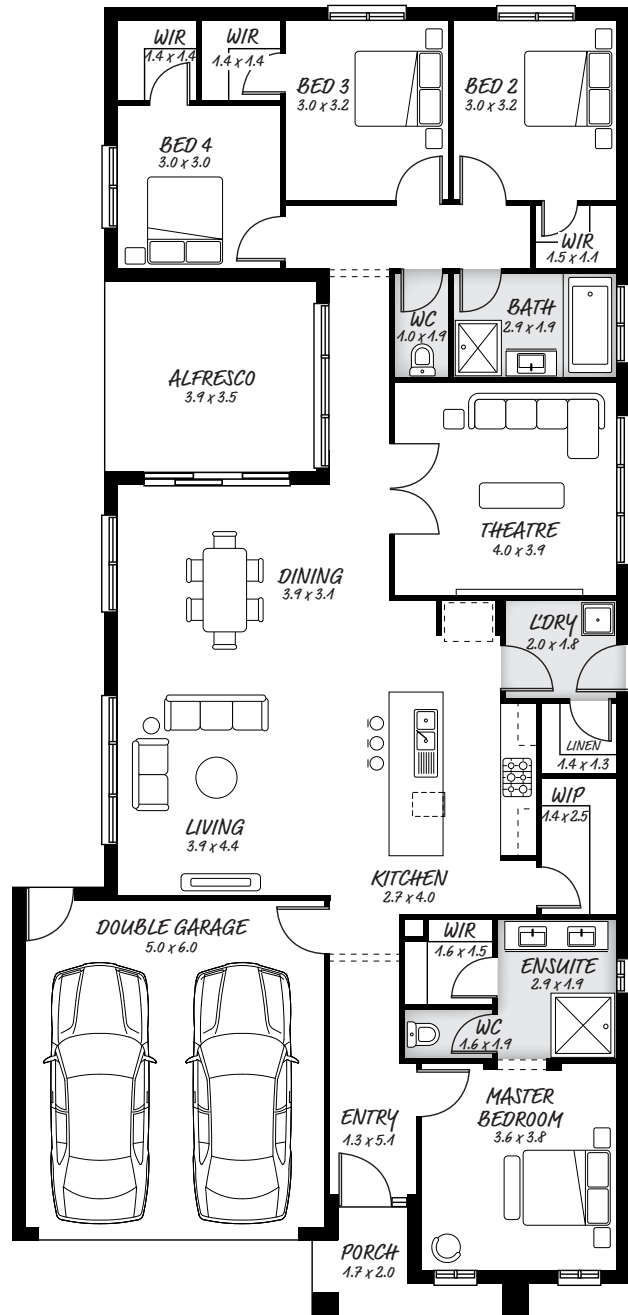
Home theatre which can double as rumpus

Doors opening from living area to outside

FACADE OPTIONS

All our designed facades can be adapted to this floor plan, however the below facades options are suggested by our design team.

- Botanic
- Griffith
- Hedgeley
- Hyde
- Monsanto
- Monsanto II



HEAD OFFICE

5/82 Gateway Blvd, Epping 3076

Ph. 1300 060 908

email: info@astonhomes.com.au

astonhomes.com.au

Sizes may vary dependant on chosen facade. Refer to final working technical drawings for final dimensions. Facade options are only a recommendation. Ask your sales representative for what floor plan best suites certain facades.