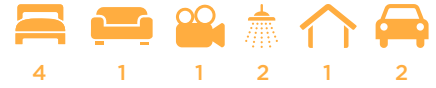


# Austin



House size: **25**sq

Block size range: **12.5m** land width / **32m** land depth

## SPECIFICATIONS

Home Width 11.50m

Home Length 23.50m

	SQ.M	SQUARES
Ground Floor	181.97m <sup>2</sup>	19.59sq
Garage	36.31m <sup>2</sup>	3.91sq
Porch	4.77m <sup>2</sup>	0.51sq
Alfresco	13.65m <sup>2</sup>	1.47sq
Total	236.70m <sup>2</sup>	25.48sq

## DESIGN FEATURES

Master Ensuite features walk-in robe

Handy access direct from garage to inside

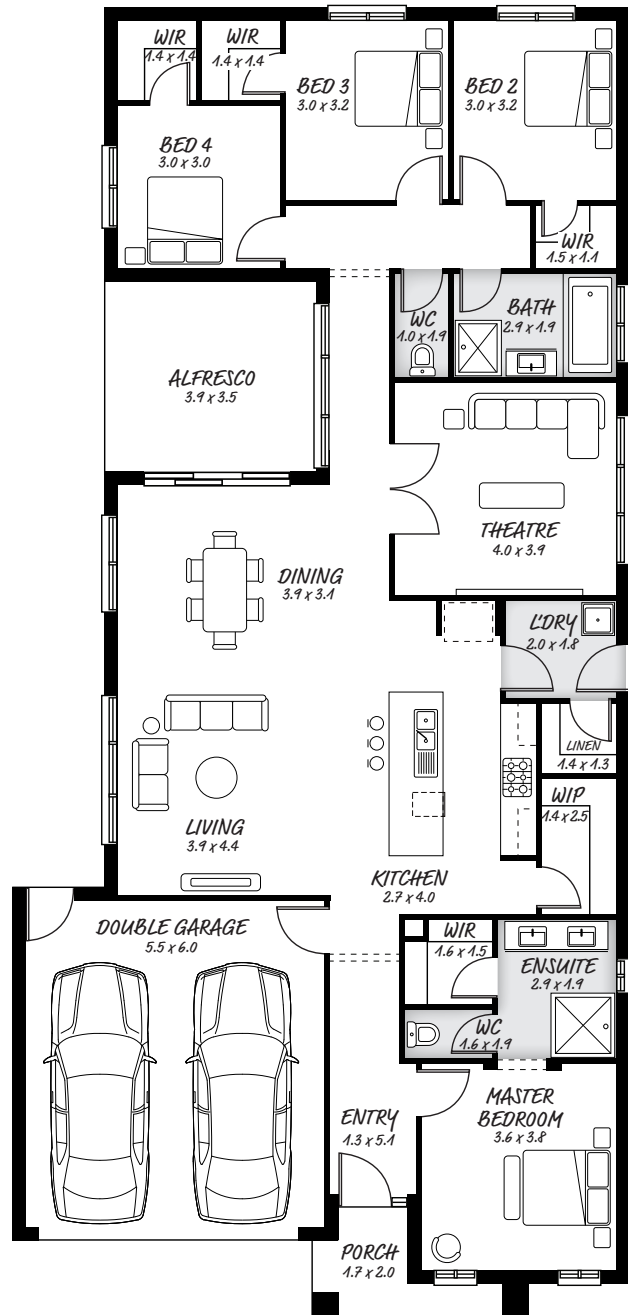
Home theatre which can double as rumpus

Doors opening from living area to outside

## FACADE OPTIONS

All our designed facades can be adapted to this floor plan, however the below facades options are suggested by our design team.

- Botanic
- Griffith
- Hedgeley
- Hyde
- Monsanto
- Monsanto II



## HEAD OFFICE

5/82 Gateway Blvd, Epping 3076

Ph. 1300 060 908

email: info@astonhomes.com.au

astonhomes.com.au

Sizes may vary dependant on chosen facade. Refer to final working technical drawings for final dimensions. Facade options are only a recommendation. Ask your sales representative for what floor plan best suites certain facades.