

Ashcombe



House size: **19**_{sq}

Block size range: **10.5m** land width / **28m** land depth

SPECIFICATIONS

Home Width	10.50m	
Home Length	20.00m	
	SQ.M	SQUARES
Ground Floor	137.77m ²	14.83sq
Garage	36.04m ²	3.88sq
Porch	4.14m ²	0.45sq
Total	177.95m²	19.16sq

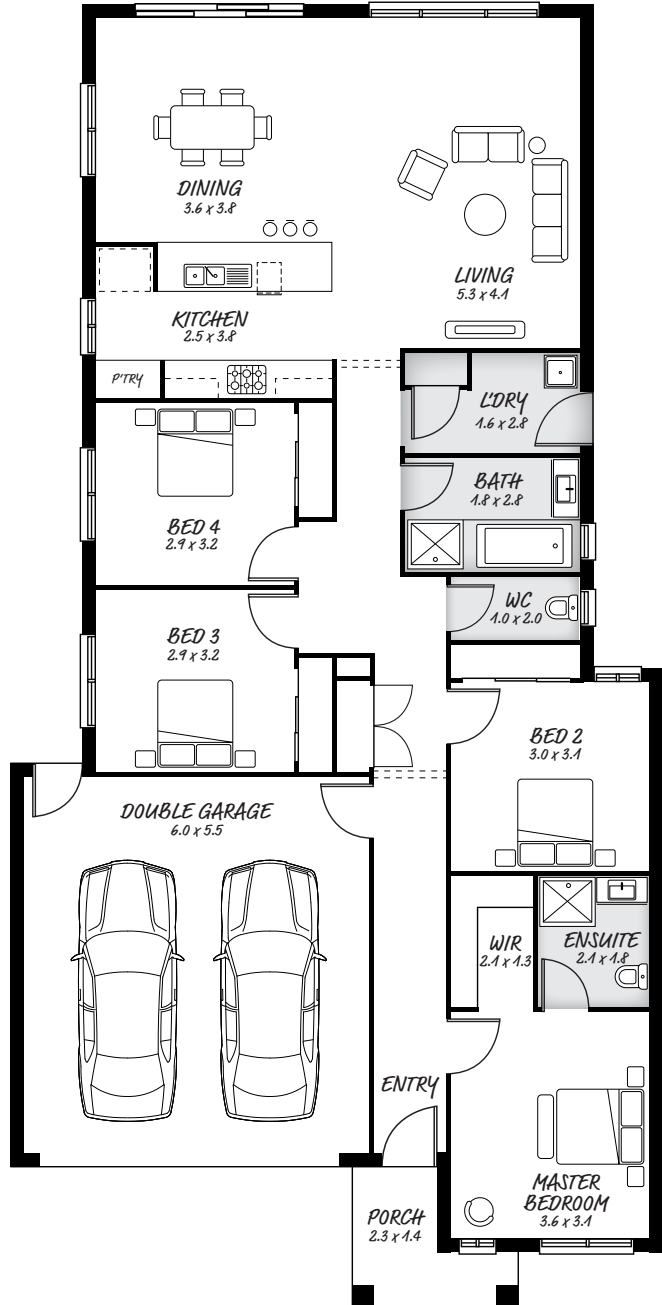
DESIGN FEATURES

- Additional storage
- Relax in your large Master bedroom
- Wide open plan to the rear of the house
- Separate wash room to main bathroom

SUGGESTED FACADE OPTIONS

All our designed facades can be adapted to this floor plan, however the below facades options are suggested by our design team.

- Botanic
- Luxembourg
- Griffith
- Phoenix
- Hedgeley
- Yarra



HEAD OFFICE

5/82 Gateway Blvd, Epping 3076

Ph. **1300 060 908**

email: info@astonhomes.com.au

astonhomes.com.au

Sizes may vary dependant on chosen facade. Refer to final working technical drawings for final dimensions. Facade options are only a recommendation. Ask your sales representative for what floor plan best suites certain facades.